



# NORTH ISLAND MTB CHAMPIONSHIPS

---



**26 - 29 March 2026**

# Event Manual

v4.4 13 March 2026

**NEW Enduro & XCO Venue:  
Waiu Trail Park, Wainuiomata**

General Entries close 6 March 2026



26-29 March 2026  
DH: Rivenrock MTB Park, Masterton  
Enduro, XCO: Waiu Trail Park, Wainuiomata



Downhill, Enduro,  
Cross Country, Relay



Enter via your School through the Sporty platform:



## Contents

SPONSORS AND SUPPORTERS	3
WELCOME	4
BREAKING - VENUE CHANGE FOR ENDURO AND XCO	4
KEY VERSION UPDATE SUMMARY	4
KEY HEALTH & SAFETY NOTES	4
KEY REFERENCES	5
OFFICIALS AND EVENT STAFF	5
GLOSSARY	6
EVENT SCHEDULE	6
GENERAL INFORMATION	9
ENTRIES: SCHOOL AFFILIATION AND ENTRY FEES	9
RACE PACK PICK-UP - LOCATIONS AND TIMES	9
MTB RULES	9
UNIFORMS	10
PRACTICE	10
PARKING	10
SAFETY COMMITMENT	10
Health & Safety Notes	11
FIRST AID	11
XCO SEEDING	11
START LISTS	11
EQUIPMENT REQUIREMENTS	12
PIT SITES/TENTS	13
SMOKE, DRUG AND ALCOHOL FREE	13
SPORTSMANSHIP	13
FOOD AND WATER	13
TOILET FACILITIES	14
NON-COMPLETION OF EVENT	14
CONTINGENCY PLANNING	14
CANCELLATIONS	14
RESULTS	14
EVENT UPDATES & SOCIAL MEDIA	14
DOWNHILL (DH) INFORMATION	15
ENDURO INFORMATION	17



ENDURO COURSE OVERVIEW AND UNOFFICIAL PRACTICE NOTES	20
END-1: Freewheel	20
END-2: 491 > Fade To Black	21
END-3: Nga Tuna > Wetland Loop	22
END-4: Labyrinth Return >Snail Trail	23
CROSS COUNTRY (XCO) INFORMATION	24
CROSS COUNTRY (XCO) COURSE	25
XCO Main Loop Description:	26
TEAMS RELAY (XCR) INFORMATION	27
TEAMS RELAY COURSE (XCR):	28
VENUE INFORMATION	29
Downhill Venue: Rivenrock MTB Park - Thr 26 & Fri 27 March 2026	29
Rivenrock Parking	29
Rivenrock Event Village	30
Enduro & XCO Venue: Waiu Trail Park - Sat 28 & Sun 29 March 2026	30
Waiu Trail Park - Parking (Sat 29 & Sun 30 March)	31
Enduro Layout - Sat 28 March	32
XCO Layout - Sun 29 March - AM	33
XCR Layout - Sun 30 March - PM	34
PROTEST FORM	35



## Sponsors and Supporters

We would like to thank the following sponsors and supporters for their contribution to this event, without them this event would not be able to take place.



GroundEffect



## Welcome

Wellington MTB Club and Port Nicholson Ponoke (PNP) Cycling Club welcome all the school students and supporters who have been able to make it to the 2026 North Island Schools MTB Championships being held in Wairarapa and Wainuiomata. We ask that you appreciate and make the most of the opportunity to participate safely in this event.

We anticipate an exciting level of racing as well as an environment that encourages riders to give racing a go and develop their riding skills.

Let's go race!

## BREAKING - Venue change for Enduro and XCO

We have been affected by recent storm events which have closed critical tracks in the Rangituhi MTB park, in Porirua. We have been forced into a late change of venue for both Enduro and XCO, which move to **Waiu Trail Park, Wainuiomata**, venue of the 2019 NI School Champs and 2020 NZ School Champs.

The Rivenrock venue for DH remains unchanged.

## Key Version Update Summary

Version	Date	Version Comments
1.0	28/1/26	Initial Draft. Enduro courses are to be finalised.
2.0	7/02/26	Updated Course Descriptions and Maps
3.0	22/2/26	Minor updates
4.0	8/3/26	XCO & Enduro move to Waiu Trail Park, Wainuiomata.
4.4	13/3/26	Updated Event Schedules & minor details

## Key Health & Safety Notes

There is more Health & Safety info later in this manual. In addition, the PNP MTB Health and Safety Policy, Emergency Response Plan and Risk Management Plan are available via links from the MTB page on the website: [pnp.org.nz/mtb](http://pnp.org.nz/mtb). However please note these two main points:

**In the event of a serious crash, do not hesitate to ring 111 even prior to contacting event staff.**

**In the event of an emergency all riders and supporters are to report to the Registration Area.** If appropriate, names will be recorded against the Rider Check-In sheets prior to participants leaving the event.



**Rivenrock, Masterton:** The Registration Area is by the Sheds at the base of the hill. If flooding is anticipated, the assembly area will be moved to the upper paddock on the northern side (main road side) of Te Whakaturkau Stream

**Waiu Trail Park, Wainuiomata:** The Registration Tent is on the grass near the carpark. If necessary, move from here to a safe location nearby on the western side of the grassy base area - on your left when entering the park.

## Key References

Reference	Comments
Age Categories	A riders age is evaluated as at <b>31 December 2026</b> . For example a rider who is 16 but turns 17 later this year must enrol as an U20 rider.
Facebook event page	<b>TBC</b>
Instagram	<b>TBC</b>
<a href="mailto:schoolsmtb2026ni@gmail.com">schoolsmtb2026ni@gmail.com</a>	Event email for additional queries
<a href="#">Rivenrock</a>	Venue for Downhill races
<a href="#">Waiu Trail Park</a>	Venue for Enduro and Cross Country
<a href="#">CNZ Schools Event Page</a>	Event summary with links to enrolment etc
<a href="#">Schools Affiliation page</a>	Instructions on affiliating schools and
Sporty platform (TBC)	Enrolments
<a href="#">Volunteering commitment</a>	As per CNZ site
<a href="#">Volunteer Registration Form</a>	Please register as a volunteer. You select sessions.
<a href="#">Rules for Schools Cycling</a>	As per CNZ site
<a href="#">Gazebo Registration Form</a>	Due to restricted space at each site, please register your gazebo here.

## Officials and Event Staff

Cycling New Zealand Schools Contact:	Steff Holcroft	027 855 7676
Event Director:	Mark Donald	021 2699 674
Race Manager (DH)	Jono Baddiley	021 662 664
Race Manager (Enduro)	Jono Baddiley	021 662 664
Race Manager (XCO)	Jason Brown	027 4213617
PCP:	Mark Donald	021 2699 674
First Aid:	Peak Safety	07 349 0903
MC:	TBC	-

## Glossary

DH: Downhill  
 E1: Enduro 1 (Course1), E2: Enduro 2 (Course2), etc  
 XCO: Cross Country (Individual)  
 XCR: Cross Country Relay (Teams)  
 TBS/C: To Be Scheduled / Completed  
 PHEC: Pre Hospital Emergency Care  
 PCP: Chief Commissaire

## Event Schedule

**Note:** All times are provisional and subject to change based on entries and other factors to ensure the best possible experience for all riders. TBS = To Be Scheduled  
 Follow the Cycling NZ Facebook event for updates.

<b>Day 0: Wed 25 March 2026</b>	
<b>Preparation: @Rivenrock</b>	
TBS	Commissaires DH Course check
9:00	Carpark open
12:00 - 4:00	Race Pack Pick-up Open
10:00+	DH Practice possible
<b>Preparation: @Waiu Trail Park</b>	
09:00	XCO (Red arrows) & END (Black arrows) Practice open
<b>Day 1: Thr 26 March 2026</b>	
<b>Downhill 1 (U13, U14, U15, U16) @Rivenrock</b>	
7:00am	Carpark Open
7:00am - 8:00am	DH Timing Chip Collection
8:00am	DH Rider briefing in the event village
8:15am - 8:45am	Practice Time: U13, U14, U15 Girls Only
8:45am - 11:30am	Practice Time: U13, U14, U15 All
11:30am - 12:00pm	Practice Time: U13, U14, U15 Boys Only
1:00pm - 2:30pm	Seeding runs: U13, U14, U15
3:00pm - 4:30pm	DHI Race Runs: U13, U14, U15
5:00pm	DHI Prize Giving: U13, U14, U15
<b>Practice: @Waiu Trail Park</b>	
09:00am+	XCO courses (Red arrows) available for pre-ride. Note: Trail intersections
09:00am+	END courses (Black arrows) available for pre-ride. Note: Trail intersections



<b>Day 2: Fri 27 March 2026</b> <b>Downhill 2 (U17, U20) @Rivenrock</b>	
7:00am	Carpark Open
7:00am - 8:00am	DH Timing Chip Collection
8:00am	DH Rider briefing in the event village
8:15am - 8:45am	Practice Time: U16, U17, U20 Girls Only
8:45am - 11:15am	Practice Time: U16, U17, U20 All
11:15am - 11:45am	Practice Time: U16, U17, U20 Boys Only
12:30pm - 1:30pm	Seeding runs: U16, U17, U20
2:00pm - 3:00pm	DH Race Runs: U16, U17, U20
3:30pm	DH Prize Giving: U16, U17, U20
<b>Practice: @Waiu Trail Park</b>	
09:00am+	XCO courses (Red arrows) available for pre-ride.
09:00am+	END courses (Black arrows) available for pre-ride
<b>Day 3: Sat 28 March 2026</b> <b>Enduro @Waiu Trail Park</b>	
7:00am	END Timing Chip Collection
7:00am	END Course Commissaire Course Check
	Race Briefing will be held before each start wave
11:00am	Enduro Wave 1 Start - U20 Boys
11:30am	Enduro Wave 2 Start - U17 Boys
12:00pm	Enduro Wave 3 Start - U16 Boys
12:30pm	Enduro Wave 4 Start - U15 Boys
1:00pm	Enduro Wave 5 Start - All other riders
4:00pm	Enduro Cut Off - No stage starts commenced after this time
4:45pm	Race 2 Prize Giving estimate
<b>Practice: @Waiu Trail Park</b>	
4:30pm	XCO Commissaire Couse Walk
5:45pm	XCO Course Open for Practice
<b>Day 4: Sun 29 March 2026</b> <b>XCO &amp; XCO Relay @Waiu Trail Park</b>	
7:00am	Late Race Pack Pick-up Open
<b>XCO Races</b>	
6:30am - 8:30am	XCO Practice (Red arrows)
8:45am	XCO Race 1 Staging: U13 & U14 Boys & Girls
9:00am	XCO Race 1 U13 & U14 Boys & Girls
10:15am	XCO Race 2 Staging: U15 & U16 Boys & Girls
10:30am	XCO Race 2 U15 & U16 Boys & Girls



12:15pm	XCO Race 3 Staging: U17 & U20 Boys & Girls
12:30pm	XCO Race 3 U17 & U20 Boys & Girls
12:00pm	XCO Race 1 & 2 Prize Giving estimate
2:30pm	XCO Race 3 & 4 Prize Giving estimate (after XCR)
<b>XCR (Team Relay) Races</b>	
2:45pm	XCR Race Briefing
3:00pm	XCR Relay Race - All categories
4:00pm	XCR Prize Giving estimate



## General Information

### **ENTRIES: SCHOOL AFFILIATION AND ENTRY FEES**

All entries must be through your school (no individual entries accepted) using the Sporty system. Details are on the [Cycling New Zealand Schools event page](#).

#### **General entries are now closed: Fri 6 Mar 2026**

Schools must be affiliated with Cycling New Zealand Schools before they can enter. All school affiliation fees and event entry fees must be paid before riders are permitted to start the event. Please check with your school to ensure payment has been made. Event fees for the 2026 Schools MTB Championships are:

- Downhill (DH): \$100
- Cross Country (XCO): \$60
- Cross Country Relay (XCR): \$75 (per team of 2-4 riders)
- Enduro (END): \$70

#### **Priority Entries for Downhill are now closed**

The Schools Downhill event has a limited capacity of 300 riders which is expected to sell out. Due to this the Cycling New Zealand Schools Entry Process takes effect (See Section 13 of [Cycling New Zealand Schools Rules](#) for details). Additional entry requests are to be waitlisted. Please include on the waitlist entry relevant details such as previous rider downhill performance which will assist with allocating remaining spaces according to the Cycling New Zealand Schools Entry Process. Remaining spaces will be allocated to riders on the waitlist and schools can expect to be notified of final Downhill entry lists after that.

Note – all entries have been accepted.

### **RACE PACK PICK-UP - LOCATIONS AND TIMES**

Race Pack pick-up will first be available at Rivenrock from 12:00pm Wed 25 March until 10am Fri 27 March. Packs will then be available from Waiu Trail Park from 12:00pm Fri 27 March.

**Race plates must be attached to any bicycle practising on the course on race days.**

### **MTB RULES**

The event is held under [Cycling New Zealand Schools Rules](#) and the [MTBNZ Technical Regulations](#).

Any race related protests must be made in writing to the President of the Commissaire Panel within 30 minutes of the completion of the race concerned using the official protest form at the end of this document. All decisions made by the Disputes Panel will be final.



## **UNIFORMS**

Please ensure your uniforms comply with the Cycling NZ School Rules.

Please refer to Section 5 (Pg 7) and Appendix 2 of the Schools Rules [here](#) for information on Uniform Guidelines. Ensure you are compliant before you arrive at the event to avoid any unnecessary stress. For any queries on this, contact [schools@cyclingtonewzealand.nz](mailto:schools@cyclingtonewzealand.nz)

## **PRACTICE**

All tracks will be marked out on or before Fri 27 March.

XCO / XCR / END trails at Waiu Trail Park are available for practice on Thursday 26 & Friday 27 March. Some sections of track are used in more than one course, **and caution should be exercised at ALL intersections during unofficial practice. SLOW DOWN**, it is only practice.

Key areas for caution during unofficial practice:

- **Nga Tuna is being used for both the XCO and Enduro races.**
- You will see both Red (XCO) and Black (End) arrows here

The XCO and XCR tracks start from the Event Village. 'ENDURO' signs will guide you to the start of the Enduro courses. Refer to the course maps later in this manual.

## **PARKING**

### **Rivenrock**

Parking will be within the park carpark, paddocks and on the local road near the venue. Please ensure that shuttle routes are not blocked or narrowed. Please see the Venue Information on page for more information.

### **Waiu Trail Park**

Parking will be mostly on the local roads near the venue. Waiu St is an industrial area and there is a lot of parking available in the weekend.

## **SAFETY COMMITMENT**

Cycling New Zealand Schools, Wellington MTB Club and PNP Cycling Club are committed to providing and maintaining utmost health and safety standards, by ensuring that all risks and hazards associated with the event are identified and managed to prevent harm from occurring to the participants and other personnel involved in accordance with the Health and Safety at Work Act 2015. Please report any hazards or incidents to the Race Office and/or race officials.



## **Health & Safety Notes**

**In the event of a serious crash, do not hesitate to ring 111 even prior to contacting event staff.**

**In the event of an emergency all riders and supporters are to report to the Registration Area.** If appropriate, names will be recorded against the Rider Check-In sheets prior to participants leaving the event.

**Rivenrock, Masterton:** The Registration Area is by the Sheds at the base of the hill. If flooding is anticipated, the assembly area will be moved to the upper paddock on the northern side (main road side) of Te Whakaturkau Stream

**Waiu Trail Park, Wainuiomata:** The Registration Tent is at the entrance of Waiu Trail Park. If necessary, move from here to a safe location nearby on Waiu Rd

## **FIRST AID**

**In an Emergency call 111**

First Aid will be available at each event. If you require medical assistance whilst not at attending an event contact details for local Medical Centres are listed below.

**Wairarapa Hospital** (Open 24 hours)  
Te Ore Ore Road, Lansdowne, Masterton 5810  
[06 946 9800](tel:069469800)

**Lower Hutt Hospital: Accident & Emergency**  
638 High St, Lower Hutt

**Lower Hutt After Hours Medical Centre**  
729 High St, Lower Hutt  
Ph: (04) 567 5345

## **XCO SEEDING**

The seeding order for XCO will be determined by the PCP according to section 22.5 of the [Rules for Schools Cycling](#).

## **START LISTS**

Start lists for events will be posted on the [Event Website](#) and shared on Facebook prior to the event, after entries close and once seedings are finalised.



## EQUIPMENT REQUIREMENTS

For equipment requirements, please refer to the MTB Protection Policy in the [MTBNZ Technical Regulations](#). U13, U14, U15, U16 and U17 must comply with the U15, U17 requirement, while U20 must comply with the U19 requirement. Items of note include:

### DOWNHILL

The following table summarises protective equipment required for downhill events specified in **section 7.4.** of the [MTBNZ Technical Regulations](#). Please refer to this for details.

	U15, U17	U19, Senior, Elite, Masters
Full Face Helmet (7.4.1)	Compulsory	Compulsory
Long Sleeve Shirt (7.4.2)	Compulsory	Compulsory
Elbow/Forearm Protection (7.4.3)	Compulsory	Highly Recommended
Long or Short Pants (7.4.4)	Compulsory	Compulsory
Knee/Shin Protection (7.4.5)	Compulsory for short and long pants	Compulsory for short pants
Neck Brace (7.4.6)	Compulsory to wear either neck brace or spinal protection <sup>5</sup>	Highly Recommended
Spinal Protection (7.4.7)		Highly Recommended
Shoulder Protection (7.4.8)	Highly Recommended	Highly Recommended
Protective Eyewear	Highly Recommended	Highly Recommended
Full Finger Gloves	Highly Recommended	Highly Recommended

### ENDURO

The following table summarises protective equipment required for enduro events specified in **section 7.4.** of the [MTBNZ Technical Regulations](#). Please refer to this for details.

	U15, U17	U19, Senior, Elite, Masters
Full Face Helmet (7.4.1)	Compulsory	Compulsory
Elbow/Forearm Protection (7.4.3)	Highly Recommended	Highly Recommended
Long or Short Pants (7.4.4)	Compulsory	Compulsory
Knee Protection (7.4.5)	Compulsory for short pants	Compulsory for short pants
Neck Brace (7.4.6)	Highly Recommended	Highly Recommended
Spinal Protection (7.4.7)	Highly Recommended	Highly Recommended
Shoulder Protection (7.4.8)	Highly Recommended	Highly Recommended
Protective Eyewear	Highly Recommended	Highly Recommended
Full Finger Gloves	Highly Recommended	Highly Recommended



### Cross Country (XCO & XCR)

The following table summarises protective equipment required for cross-country events as specified in **section 7.4.** of the [MTBNZ Technical Regulations](#). Please refer to this for details.

	All Categories
Helmet	Compulsory
Protective Eyewear	Highly Recommended
Full Finger Gloves	Highly Recommended

### PIT SITES/TENTS

Schools are responsible for providing adequate shelter for their riders. Sites available on a first in first served basis by registering using the [Gazebo Registration Form](#) and must be placed in a dedicated area in the event villages. Please use no more space than is necessary. Please ensure that any structures erected suit the conditions (Wellington can be windy!). Schools are also responsible for removing any waste at the end of each day. Please help us in supporting our host venues and respect their property.

Schools will be able to set up sites from 4pm Wed 25 March at Rivenrock and from 4pm Fri 27 March at Waiu Trail Park. There will be a static security guard at Waiu Trail Park 7.00 pm – 7.00 am on Friday and Saturday evening at Waiu Trail Park. There will be no on-site security at Rivenrock. The organisers take no responsibility for any equipment left overnight.

### SMOKE, DRUG AND ALCOHOL FREE

The entire event is smoke, drug and alcohol free. Please ensure all your supporters are aware of this.

### SPORTSMANSHIP

Sportsmanship is important at any level of mountain biking. We highly encourage you to watch out for your fellow riders, whether they be your teammates or not. Please be considerate of faster riders and allow them to pass at the next possible spot that you deem is safe for yourself, and the other rider to pass. Please pass this onto your students, and if we hear of any foul play the competitor could face being disqualified.

### FOOD AND WATER

Limited water is available on-site at the Event Villages. Please ensure students have sufficient fluid and nutrition for the duration of the event.

There will be a coffee cart and other food available at both sites. [Caveman BBQ](#) will be present at Rivenrock and soft drinks available from the Rivenrock office. There are no food outlets close to Rivenrock. There are food outlets close to Waiu Trail Park.



## **TOILET FACILITIES**

Toilet facilities will be available on site.

## **NON-COMPLETION OF EVENT**

Please reiterate to your students that if for some reason they cannot finish the event they must tell a race official. All riders must return their race timing tag. A replacement fee of \$90 may be charge for tags which are not returned.

## **CONTINGENCY PLANNING**

The event recognises that there is the potential for circumstances outside of their control occurring that could result in the published event format and/or distance being adjusted in the interest of participant and officials' safety. If inclement conditions exist, all decisions regarding the implementation of the contingency plan will be made by the Race Organisers.

## **CANCELLATIONS**

The organisers reserve the right to cancel one or more of the events in the case of adverse weather or any other adverse conditions. Any contingency plans will be announced via Facebook and the website.

*Any refunds will be at the discretion of the organisers.*

## **RESULTS**

Provisional results will be available online and/or posted throughout the event duration.

Please note these are provisional and any **queries are to be made by the Team Manager only** directly to the PCP. Any Protests are to be submitted in writing (see form at back of programme) and will be reviewed by the Disputes Panel.

Official results will be posted to [Cycling New Zealand Schools](#) as soon as possible after the event.

## **EVENT UPDATES & SOCIAL MEDIA**

Event information will primarily be through the [event website](#) and channels listed previously.

Any urgent information will be posted on Facebook and emailed out to all schools and riders. Please ensure that you enter a valid email address through the entry process.

We encourage you to get involved in the event through social media.



## DOWNHILL (DH) INFORMATION

- Event:** North Island Schools Downhill
- Dates:** Thursday 26 & Friday 27 March 2026
- Location:** Rivenrock MTB Park, Carterton, Wairarapa
- Race Pack Pickup:** Rivenrock from 12:00pm Wed 25 March to 10am Fri 27 March. Please note – DH Timing Chips must be collected separately on the morning of the event, and must be attached prior to practice.
- Track walking:** **TBS:** DH track walk will close the tacks at some stage.
- Briefing/Racing times:** Please refer to the earlier **Event Schedule**
- Prize giving:** At the race venue after the race, approx. 5:00pm.
- Race plates:** All riders are to wear the issued race number (1 per rider) placed in front of handlebars during practice and racing. Please do not cut or reconfigure in any way.
- Seeding:** Please refer to General Event Information
- Shuttle Route:** Shuttling is provided by Rivenrock MTB Park. **NO self shuttling** is possible.
- Min. Practice Runs:** Riders must complete at least two practice runs in the morning practice session to qualify for the timed runs in the afternoon.

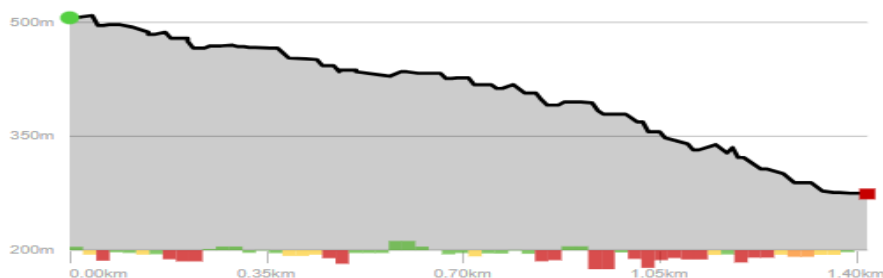
### DH Route Notes:

On Trailforks you can look at: [NZDH / NISS Downhill Track](#)

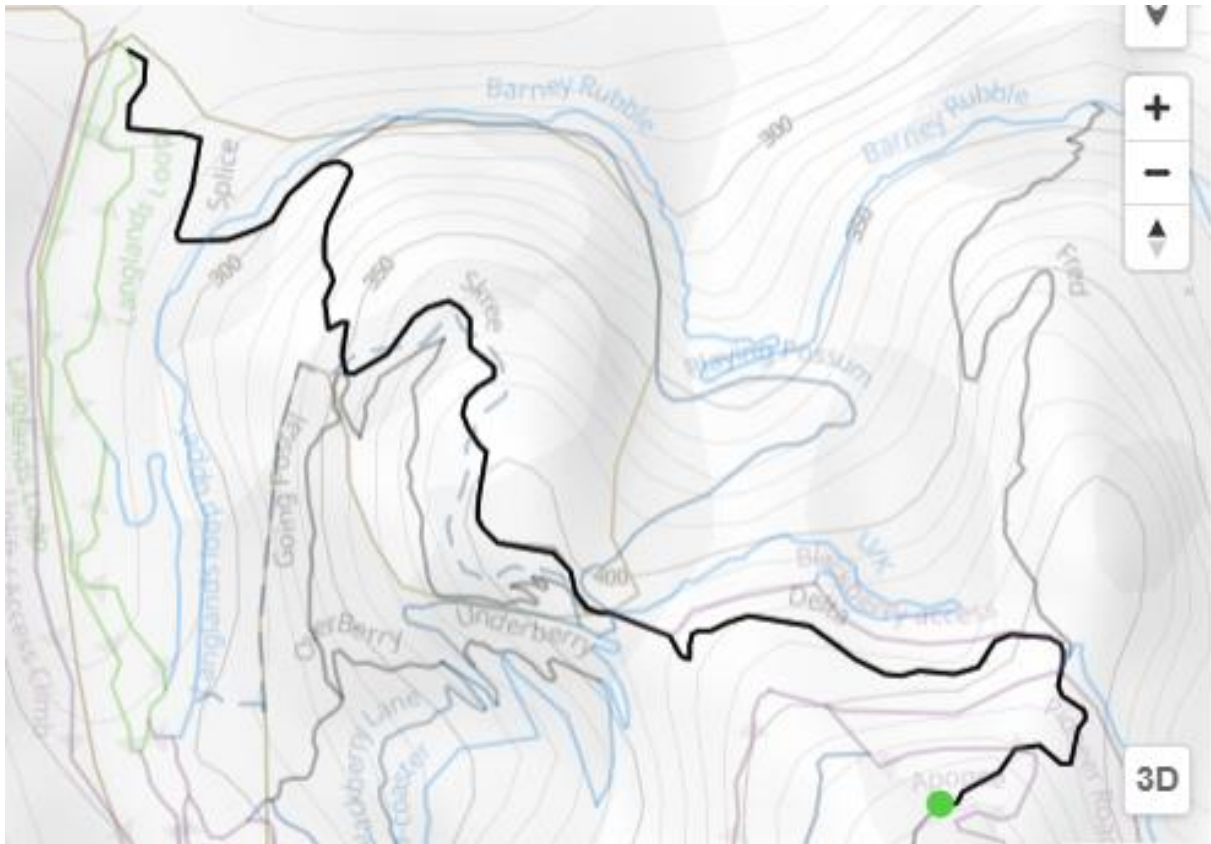
The DH trail is the same trail as used for the NZDH event held at Rivenrock on 1 Nov 2025. It links a number of existing trails at Rivenrock, and includes varied terrain. There are off camber sections, steps, fast sections and table top jumps. All drops are rollable, or have b lines around them

Distance	Climb	Descent	Grade(s)	Comments
1.4k	1m	232	4-5	Black Diamond (with B-lines)

### Elevation Chart



Course Maps





## ENDURO INFORMATION

<b>Event:</b>	<b>North Island Schools Enduro</b>
<b>Date:</b>	Sat 28 March 2026
<b>Location:</b>	Waiu Trail Park Park, Wainuiomata
<b>Race Pack Pickup:</b>	Race Packs will initially be available at Rivenrock (DH venue) Packs will be available at Waiu Trail Park from 12:00pm Fri 27 March.  END Timing Chips must be picked up on the morning of the event, separately to the race packs.
<b>Practice time:</b>	Unofficial practice Thu 26 March and Fri 27 March. Caution to be exercised while course marking is under way. Course marking is not expected to be complete until Friday evening. Official practice is yet to be scheduled.
<b>Track conflicts:</b>	Some parts of the Enduro tracks (including the stage access routes) are shared with XCO/XCR. Beware of intersections if riding during public access times.
<b>Briefing/Racing times:</b>	<b>Please refer to the earlier Event Schedule on page</b>
<b>Prize giving:</b>	At the race venue approx. 30 mins after completing each session.
<b>Race plates:</b>	All riders are to wear the issued race number (1 per rider) placed in front of handlebars during practice and racing. Please do not cut or reconfigure the race plate in any way.
<b>Seeding:</b>	Riders will need to unofficialseed within their age/gender groups. Riders will start at 20-30 second intervals.
<b>Description:</b>	Enduro will consist of the accumulated time to complete multiple Enduro stages. Untimed transitions to the start of the next stage must be unassisted i.e. <b>NO SHUTTling</b> . Riding up to stage starts must be within the park along designated routes.
<b>Equipment (Helmets):</b>	<b>A full face helmet, meeting <i>specified</i> Safety Certification standards is MANDATORY at ALL TIMES while riding in the park. Only the chin guard may be removed when NOT racing.</b> Please refer to <b>Equipment Requirements</b> on page for details.
<b>Course &amp; Uphill Routes:</b>	The courses for the timed Enduro stages and routes to access their start points are described in the following sections.



## Course Allocations & Departure Waves

**Provisional** allocations are below. Final group allocations to morning/afternoons sessions will be determined after entries are closed and numbers are finalised.

**Order:** Courses will be cycled through in the same order, but with different start points. This means that the access routes from one stage to the next will be consistent, until finished.

Course	Access To / From:
<b>END-1 Freewheel</b>	
Access if first	Into Wetland Loop (western entrance) > Directa > Jungle Gym > 4WD (past Spoonhill Hub) into Freewheel on LEFT. Up to high point (trig).
Getting to END-2	Ride up 4WD to Spoonhill Hub (on right). <i>END-2 and END-4 start here.</i>
Return to Base	If finished: Ride down Beeline (G5) to the Event Base.
<b>END-2 - 491 &gt; Fade To Black</b>	
Access if first	Up Wetland Loop (western entrance) > Directa > Jungle Gym > 4WD > into Spoonhill Hub, on right. <i>END-2 and END-4 start here.</i>
Getting to END-3	Turn right out of Fade to Black and head along Mohaka Meander. You will arrive at the top of END-3.
Return to Base	Option1: Wait for a break and follow the END-3 stage back to base. Option2: Ride down Spoonhill (G5) to the Parkway playground. Turn right at Parkway road and then right again into Waiu Street to get back to the Event Base.
<b>END-3 - Nga Tuna &gt; Wetland Loop</b>	
Access if first	Up Wetland Loop (eastern entrance - limited time entry) > Turn left at the T intersection, left again, and then a hair-pin right up Second Star. The entrance to Nga Tuna is at the top
Getting to END-4	From the Event Base, turn left and ride Wetland Loop clockwise. Turn left up Second Start to the start of E3.
Return to Base	If finished: Easy! You are already back at the Event Base.
<b>END-4: Labyrinth &gt; Snails</b>	
Access if first	Up Wetland Loop (western entrance) > Directa > Jungle Gym > 4WD > into Spoonhill Hub, on right. <i>END-2 and END-4 start here.</i>
Getting to END-1	From the bottom of Snails, <b>turn right</b> and ride Wetland Loop anti-clockwise. Turn right up Directa > Jungle Gym > 4WD (past Spoonhill Hub) into Freewheel on LEFT. Up to high point (trig).
Return to Base	If finished: From the bottom of Snails, <b>turn right</b> and ride all of the Wetland Loop anti-clockwise back to the Event Base.



**Rotation of Enduro courses is yet to be allocated to Groups.**

**Morning**

Dept	N	Group	First	Second	Third	Fourth
1		U15 Boys				
2		U15 Girls				
3		U14 Boys				
4		U14 Girls				
5		U13 Boys				
6		U13 Girls				

**Afternoon**

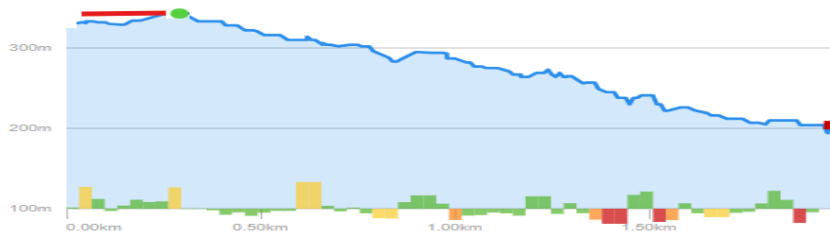
Dept	N	Group	First	Second	Third	Fourth
1		U20 Boys				
2		U20 Girls				
3		U17 Boys				
4		U17 Girls				
5		U16 Girls				
6		U16 Boys				

## Enduro Course Overview and Unofficial Practice Notes

### END-1: Freewheel

This stage starts at the highest point of the park (Towa Peak, 348m- with views across to Wellington) and finishes near the Wainuiomata Road saddle, near the Bridge over the road.

Distance	Climb	Descent	Grade(s)	Comments
1.8 km	11 m	155	3	



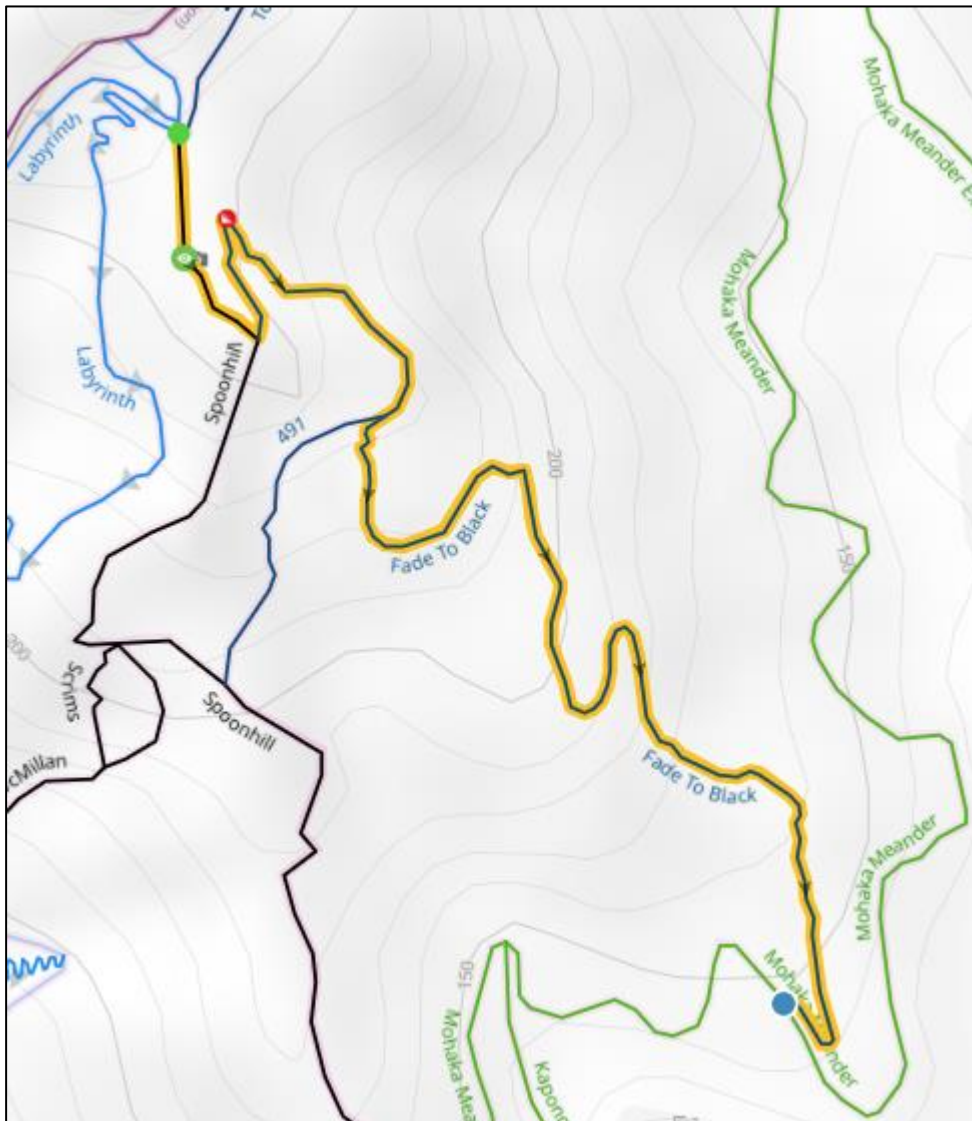
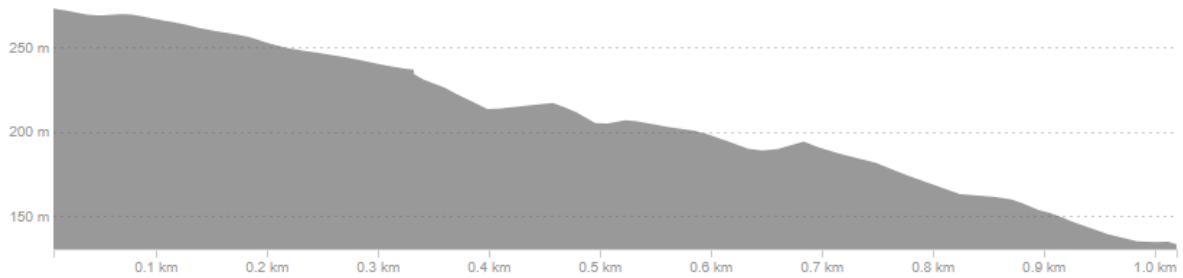
**Course maps.** Please note that the Enduro start is from the peak: Towa 348m



### END-2: 491 > Fade To Black

Starting at the Spoonhill Hub (same start point as END-4) this trail goes into Spoonhill, before turning left into 491, then left again into Fade to Black. Turn right at the exit.

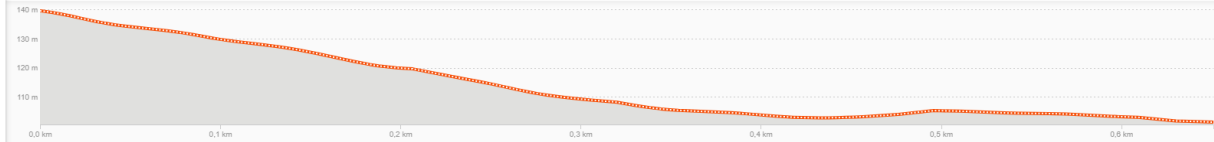
Distance	Climb	Descent	Grade(s)	Comments
1.0	9m	140m	4	



### END-3: Nga Tuna > Wetland Loop

This is a short Enduro Stage, returning to the Event Base.

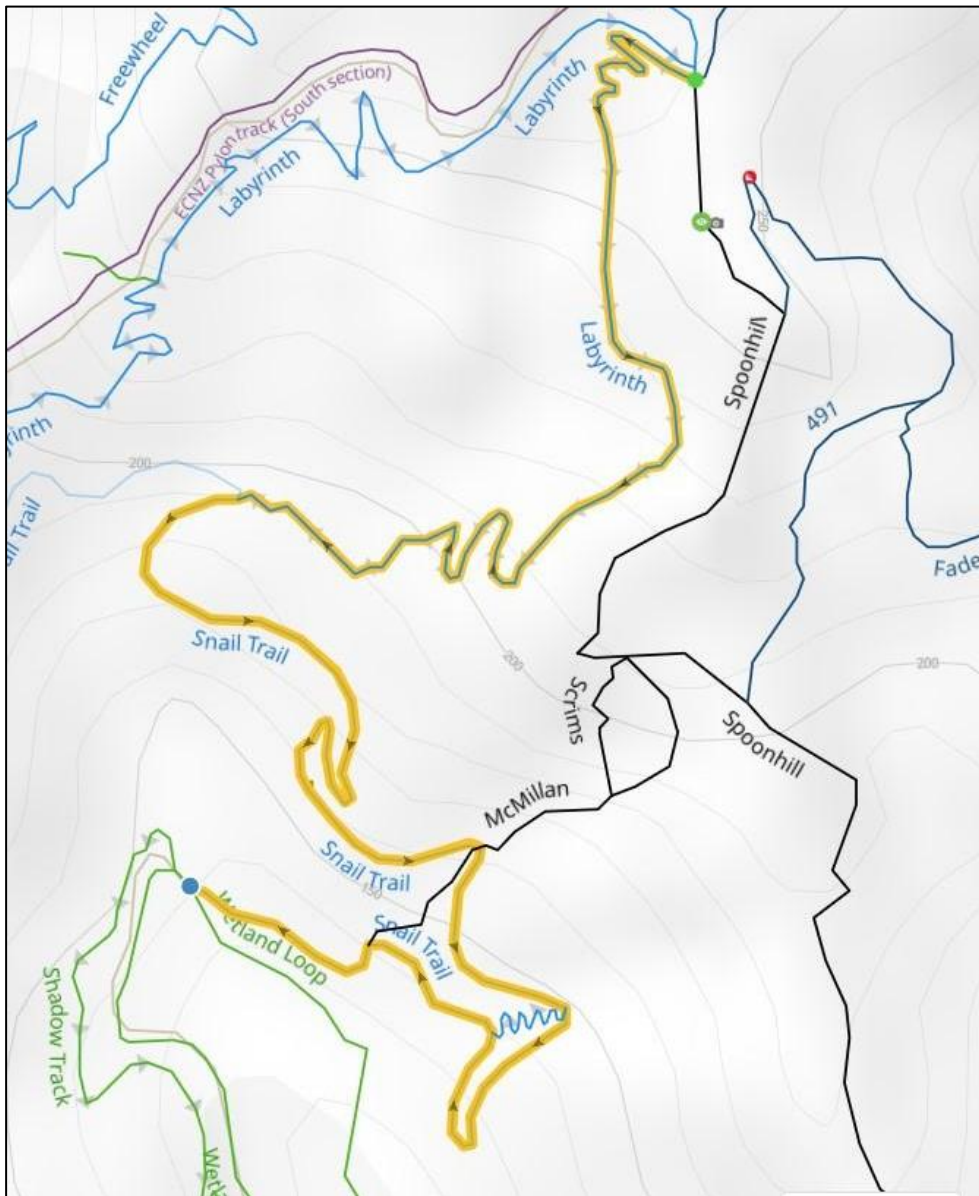
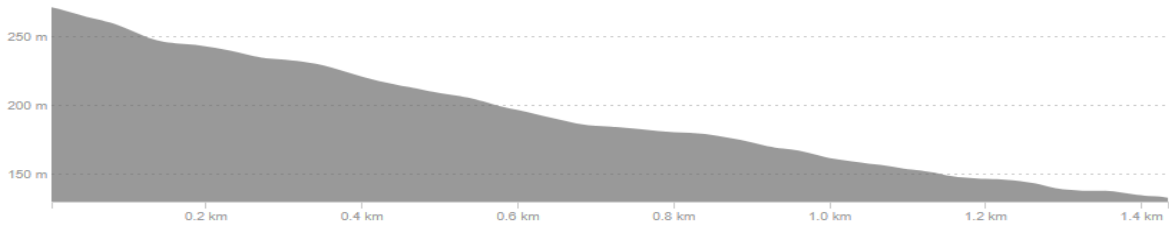
Distance	Climb	Descent	Grade(s)	Comments
650m	2m	39	4/2	Short. Flat 2 <sup>nd</sup> Half



### END-4: Labyrinth Return > Snail Trail

Starting at the Spoonhill Hub (same start point as END-2) this trail goes into the downhill section of Labyrinth (Labyrinth Return) then into Snail Trail, finishing at the Wetland Loop.

Distance	Climb	Descent	Grade(s)	Comments
2.0	6m	140	3	Grade 3





## CROSS COUNTRY (XCO) INFORMATION

- Event:** North Island Schools Cross Country (Individual)
- Date:** Sun 29 March 2026
- Location:** Waiu Trail Park Park, Wainuiomata
- Race Pack Pickup:** Race Packs will initially be available at Rivenrock (DH venue)  
Packs will be available at Waiu Trail Park from 12:00pm Fri 27 March
- Practice time:** Unofficial practice Thu 26 March and Fri 27 March. Caution to be exercised while course marking is under way. Official practice is yet to be scheduled. Trails will be **unavailable during the Enduro event on Sat 26 March.**
- Track conflicts:** Some parts of the XCO track are shared with Enduro. Beware of intersections if riding during public access times.
- Briefing/Racing times:** Please refer to the earlier Event Schedule on page
- Prize giving:** At the race venue after all XCO races, approx. 1:30pm.
- Race plates:** All riders are to wear the issued race number (1 per rider) placed vertically in front of handlebars during practice and racing. Please do not cut or reconfigure in any way.
- Seeding:** Please refer to General Event Information
- Feed Zone:** Competitors may only receive food and water from an assistant within the designated feed zone. The person feeding may not touch the competitor or the competitor's bicycle.
- Tech Zone:** Riders may receive technical assistance only within the Tech Zone from their feeder, school mechanic or neutral assistance.  
Active riders may perform their own repairs and/or assist other riders from their own school anywhere on the course, but they must only use tools/parts carried by the rider(s) or collected from the Tech Zone.
- Lap Guidelines:** **Provisional** laps and waves are below **(TBC)**. Final wave groups and lap numbers will be determined by the Race Commissaires and will be communicated at the start line briefing at the latest.

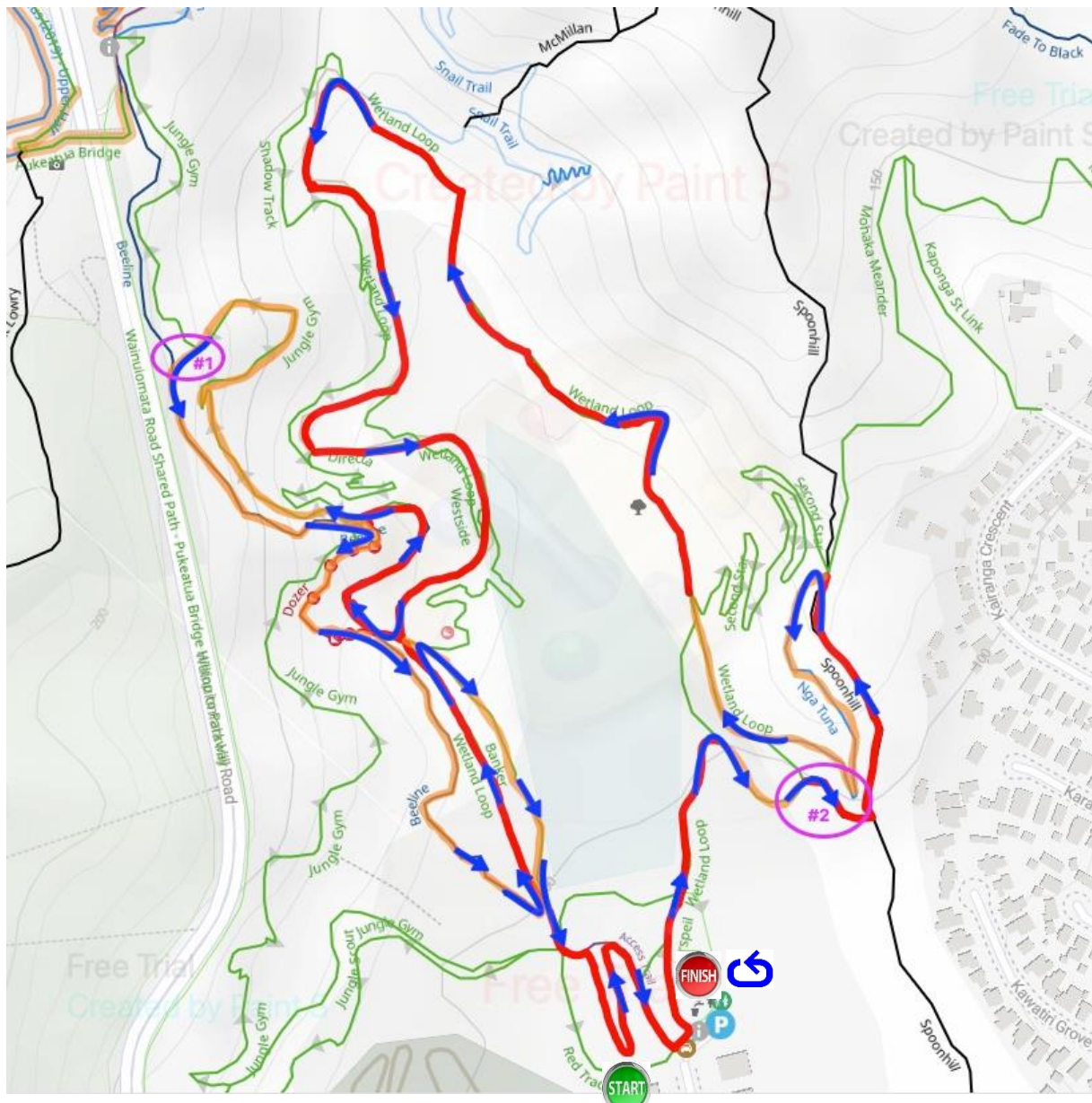
RACE	N	Wave	Age Group	Start Loop (0.8 kms)	Main Loops (5.4 kms)	Total Distance
XCOx			U14 Boys			
XCOx			U13 Boys			
XCOx			U15 Girls			
XCOx			U14 Girls			
XCOx			U13 Girls			
XCOx			U16 Boys			
XCOx			U15 Boys			
XCOx			U20 Boys			

RACE	N	Wave	Age Group	Start Loop (0.8 kms)	Main Loops (5.4 kms)	Total Distance
XCOx			U17 Boys			
XCOx			U20 Girls			
XCOx			U17 Girls			
XCOx			U16 Girls			

## Cross Country (XCO) Course

### XCO Main Loop Profile

Distance	Climb	Descent	Grade(s)	Comments



### XCO Main Loop Description:



Start: Event Base 1	The Start will be back from the Finish Line to add an additional 'up/down/up' distance through the grassed event base area before heading into singletrack (Wetland Loop).
Wetland Loop Pt1	Riders enter Wetland Loop then turn right at the T intersection.
Spexit (#2)	Riders turn right into Spexit and do a short (70m) technical climb.
Spoonhill	At the ridge, riders turn left and ride up the ridgeline (150m)
NgaTuna	Riders turn left and ride down Nga Tuna (330m)
Wetland Loop Pt2	Riders do a long anti-clockwise loop of most of Wetland Loop (1.5km)
Beeline Pt2 (up)	Riders turn right into Beeline, riding this section uphill to the Hub (NNNm)
Upper Jungle Gym	Riders ride through the Beeline Hub into the upper section of Jungle Gym and ride half-way to the end of this track (NNNm).
Connector (#1)	Riders turn left into a short connector track to join Beeline (20m)
Beeline Pt1	Riders turn left and ride down Upper Beeline, back to the Hub (NNNm).
Dozer	Riders ride into Dozer (G6), where B-Lines will be taken (NNNm). Note: Jump features will be taped off or temporarily modified.
Beeline Pt3	At the exit of Dozer, riders will ride into Lower Beeline, back towards the Event Base (NNNm).
Wetland Loop Pt3	Riders turn left into Wetland Loop, riding this section clockwise (NNNm).
Banker	Riders turn right into Banker and complete this track (NNNm).
Event Base	Riders exit Banker and ride into the Event Base, heading down the grass to a coned hairpin bend - where they started. Riders complete the 'up/down/up' section through the Event Base to the Finish Line.
Finish/Repeat	Riders finish if they have completed the required number of loops, or continue riding into Wetland Loop to begin another loop.





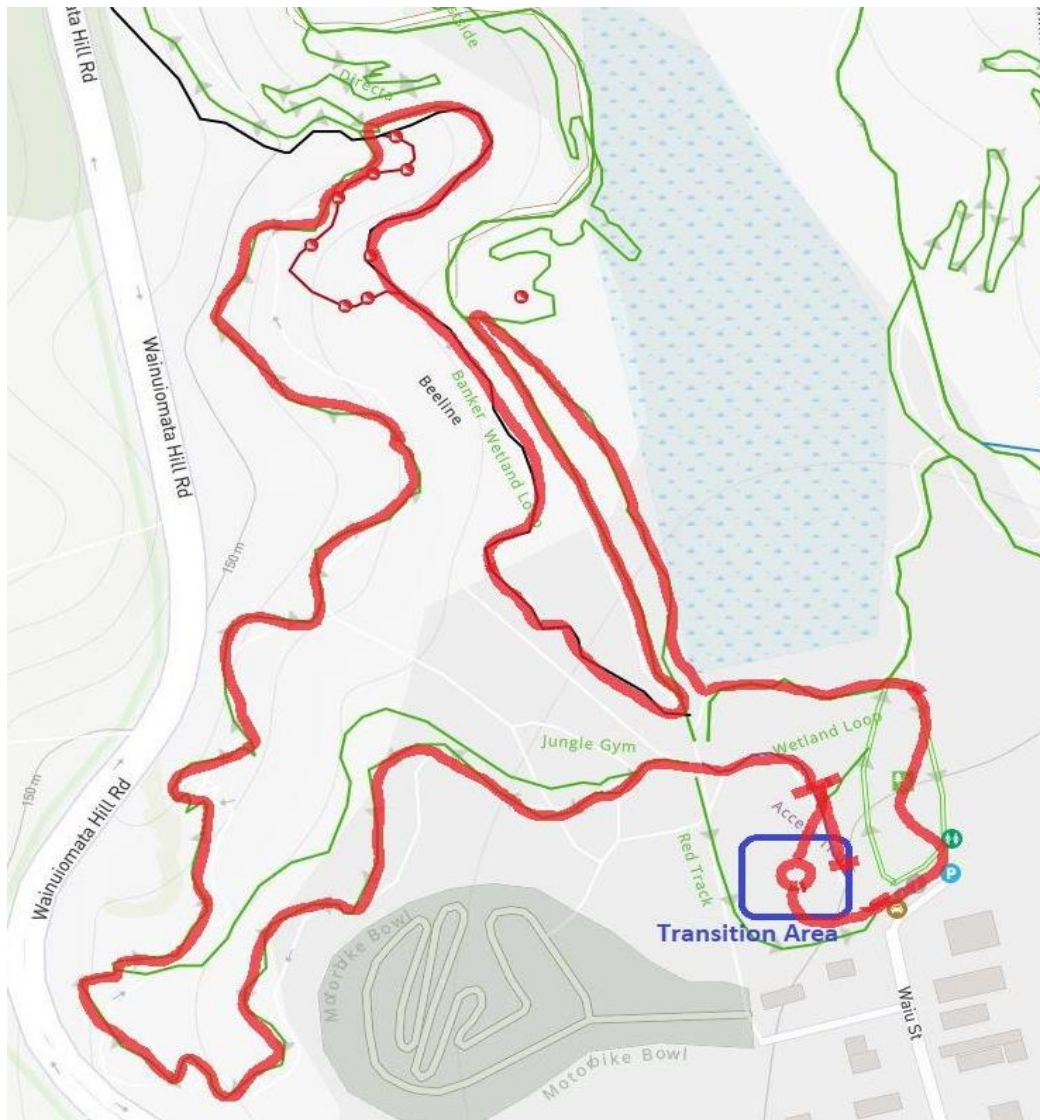
## TEAMS RELAY (XCR) INFORMATION

<b>Event:</b>	<b>North Island Schools Cross Country Relay</b>
<b>Date:</b>	Sun 29 March 2026
<b>Location:</b>	Waiu Trail Park Park, Wainuiomata
<b>Race Pack Pickup:</b>	Race Packs will initially be available at Rivenrock (DH venue) Packs will be available at Waiu Trail Park from 12:00pm Fri 27 March
<b>Practice time:</b>	Official practice time is yet to be scheduled.
<b>Track conflicts:</b>	This track is based on the XCO Start Loop. Beware of conflicts if riding during public access times.
<b>Briefing/Racing times:</b>	Please refer to the earlier Event Schedule on page
<b>Prize giving:</b>	At the race venue after the XCR race, approx. 4:30pm.
<b>Race plates:</b>	Each rider is issued a separate race plate to be attached to the bike during practice and racing. Each team will share one race timing tag, so will swap this with their team mate at the changeover between laps.
<b>Categories:</b>	U16 & U20 x Girls, Boys, Mixed (min one female & one male)
<b>Description:</b>	Teams Relay will consist of teams of two to four riders who will rotate riders every lap in order for the duration of the race.
<b>Composite Teams:</b>	Composite Teams with riders from multiple schools may be entered but must state the names of all schools and cannot be eligible for titles or medals.
<b>Course:</b>	Refer next page for XCR course description.
<b>Relay Notes:</b>	Riders must dismount before entering the transition area, then run (with their bike) and <b>pass the timing tag</b> to the next rider.  Riders must ride <b>single laps</b> in their designated order (Rider 1 tags Rider 2 who tags Rider 3, who tags Rider 1, etc) and may not miss a rider from their turn. Failure to do so will result in disqualification.  Bike repairs, can be undertaken in the transition area. Bikes (+ tags) cannot be removed in order to undergo repairs.
<b>Race Finish:</b>	To complete the race, after the designated time the transition area will be closed and the final riders will ride directly to the Finish line.  The closure of the transition area, and the need for the rider to ride on to the Finish line will be signalled by the waving of a chequered Finish flag prior to the transition area.

**Teams Relay Course (XCR):**

This 'clockwise' loop incorporates the trails: Jungle Gym (lower), Beeline (lower), Wetland Loop (western), Banker and a small loop through the Event Village. Riders for the first loop start beside the transition zone.

Distance	Climb	Descent	Grade(s)	Comments
2.5 km	100 m	100 m	2 – 3	The first 1.6 km of the lap is the same as the first climb and first descent in the XCO main loop. Beeline Extension has easy options open.

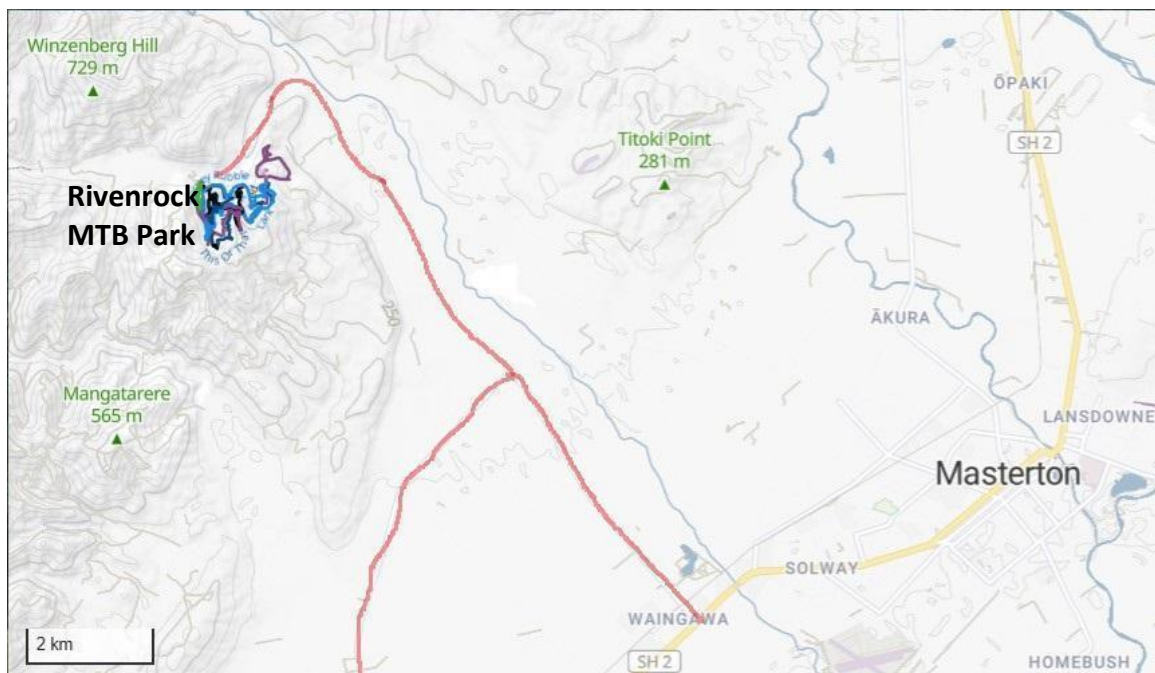


## Venue Information

### **Downhill Venue: Rivenrock MTB Park - Thr 26 & Fri 27 March 2026**

[Rivenrock Mountainbike Park](#) is a purpose built and professionally designed Mountain Bike Park for all levels of mountain bikers, located in the Wairarapa. Rivenrock features a network of professionally designed and built trails to suit riders of all styles and ability. Rivenrock also offers a shuttle to transport riders.

Rivenrock is at 217 Mount Holdsworth Road, Carterton, which is **1 hour 40 min drive north from Wellington CBD** on SH2 across the Remutaka Hill Road. It can be viewed on [Google Maps](#).



### **Rivenrock Parking**

Parking will be within the park carpark, paddocks and on the local road near the venue. Please ensure that shuttle routes are not blocked or narrowed.

## Rivenrock Event Village

Rivenrock has space for event parking and limited grass space for gazebos. Please reserve your spot using the [Gazebo Registration Form](#). The Event Village space allocation is yet to be finalized.



## Enduro & XCO Venue: Waiu Trail Park - Sat 28 & Sun 29 March 2026

Waiu Trail Park (official name) is at the entrance to Wainuiomata on the hills overlooking Wellington Harbour. It is in Lower Hutt City and only a 20 min drive from Wellington CBD.

To get to Waiu Trail Park, follow signs to Wainuiomata leading you to Wainuiomata Road which climbs up the eastern hills. Come down the Wainuiomata side of the hill and turn left into Parkway at the first roundabout, then left again into Waiu St, with the MTB park at the end of the street. More park details are toward the end of this manual.



### **Waiu Trail Park - Parking (Sat 29 & Sun 30 March)**

Parking will be mostly on the local roads near the venue, but there is significant parking available in the surrounding industrial area streets, particularly during the weekend when the Enduro and XCO events are being held.

## Enduro Layout - Sat 28 March

The East Entrance of Wetland Loop can only be used by riders doing END-3 Nga Tun first, and only for a limited time after briefing and *before racing starts* as this is the finish of the END-3 Stage.

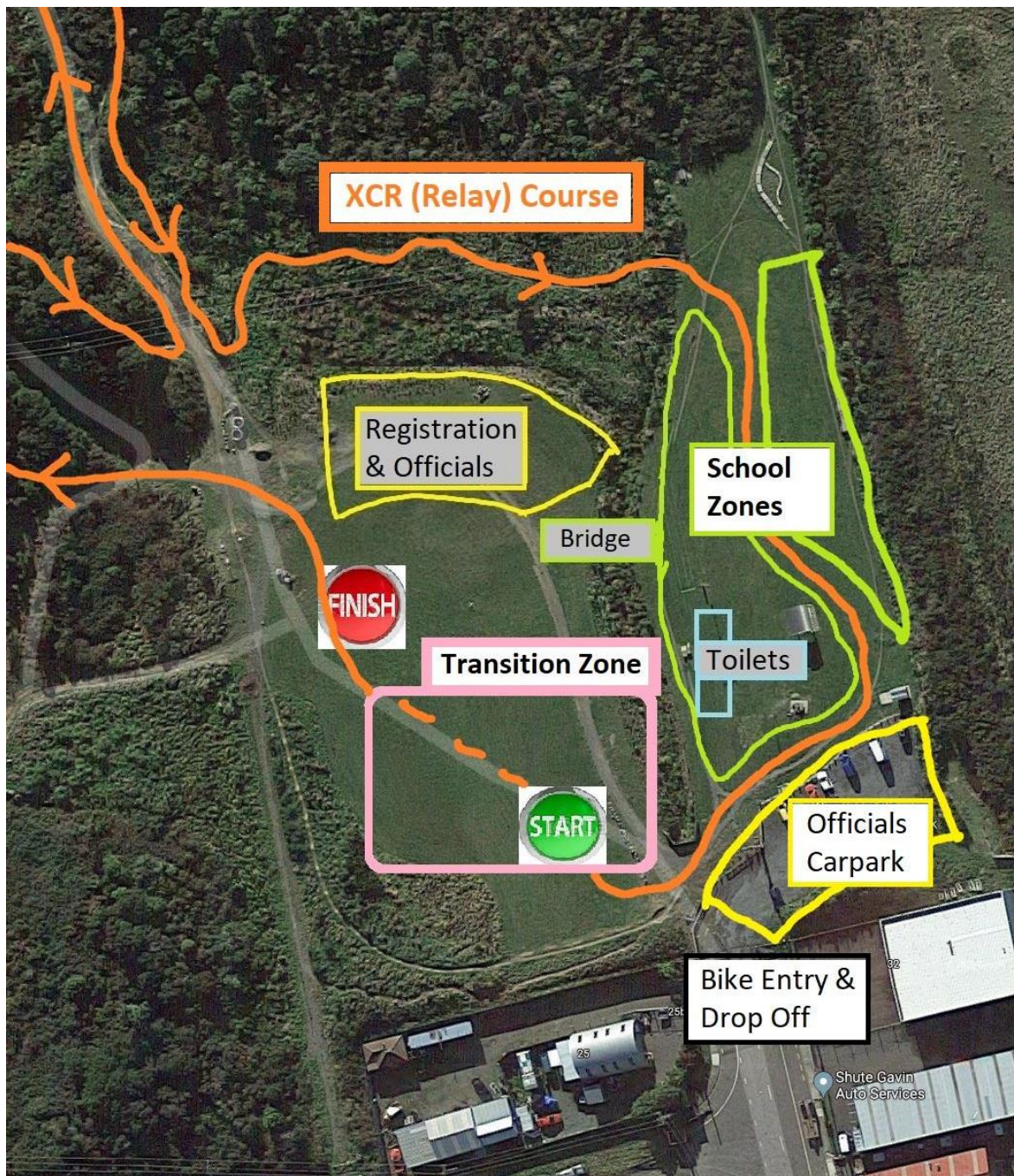


### XCO Layout - Sun 29 March - AM

There will be a controlled crossing from the Officials Carpark to the School Zones, with a bridge to cross between the two sections of the Event Village.



## XCR Layout - Sun 30 March - PM



XCR riders will start and follow the orange line left into Jungle Gym. There is no Start Loop for XCR. Riders must dismount BEFORE ENTERING the **XCR Rider Transition Zone** and the new riders can only mount their bicycles AFTER EXITING this transition zone.

Once 1.5 hours is completed, the **XCR Rider Transition Zone** will CLOSE and the final rider will be able to ride through to the finish line. A chequered flag and bell will indicate when the Transition Zone is closed.

There will be a controlled crossing from the Officials Carpark to the School Zones, with a bridge to cross between the two sections of the Event Village.



## Protest Form

Event: \_\_\_\_\_

Race: \_\_\_\_\_

Date: \_\_\_\_\_

Protesting School: \_\_\_\_\_

School Team Manager: \_\_\_\_\_

Contact Mobile: \_\_\_\_\_

Contact Email: \_\_\_\_\_

Name of Rider or Team: \_\_\_\_\_

Other Party (Rider, Team or Official): \_\_\_\_\_

Date/Time of Incident: \_\_\_\_\_

Location of Incident: \_\_\_\_\_

Nature of Incident (Brief Description):

Outcome Sought:

## Organisers Use Only

Date/Time Protest Received: \_\_\_\_\_

Protest Fee Received (\$50):  Held By (Official Receiving Protest): \_\_\_\_\_

Passed to PCP (Date/Time): \_\_\_\_\_

Outcome Determined: